

# alpha trace. system catalogue.

[www.alphatrace.at](http://www.alphatrace.at)

System carts  
Photic stimulator  
Amplifiers  
Cameras  
IR-beamer



# System carts

**Superlight**  
(article number: SYSWA-TTHVK)



**Superlight Laptop**  
(article number: SYSWA-TTHVKL)

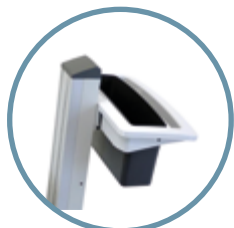


These space saving, light system carts are especially designed for EEG and EMG recordings.

- + Benefits**
- + Open architecture for maximum flexibility
  - + Height adjustable with one finger only
  - + For sitting and standing operation
  - + Optional inkjet printer on the cart

**Technical details**  
PC size ≤24" | Load capacity <11.8kg | Weight 17kg | isolating transformer included  
Height adjustment 677-1184mm | Dimensions max. 1184 (H)/624 (D)/508 (W) in mm

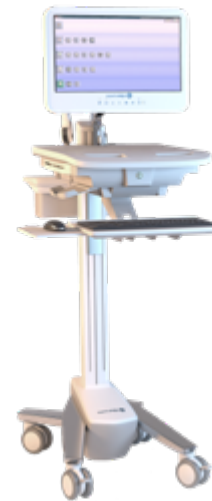
## Equipment:



Basket and handle  
Standard equipment



Wire basket (optional)  
article number: SYSWA-TTHVK-K



## Ergonomics

(article number: SYSWA-TTHV)

This system cart features sit-to-stand height adjustment and is ideal for mobile and stationary EEG recordings.

### + Benefits

- + Easy to maneuver
- + Truly ergonomic for every body size
- + Side-to-side keyboard motion
- + Antimicrobial surface sealing
- + Optionally equipped with video

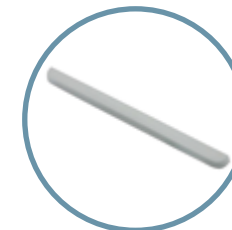
### Technical details

PC size ≤24" | Load capacity <15.9kg | Weight 24.5kg  
Height adjustment 787-1295mm | isolating transformer included | Dimensions: 1282 (H)/533 (D)/489 (W) in mm | Tilt 25° | Pan 24° | Rotation 90°

## Equipment:



Basket and handle  
standard equipment



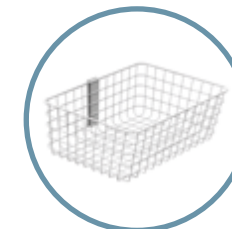
Wrist rest  
standard equipment



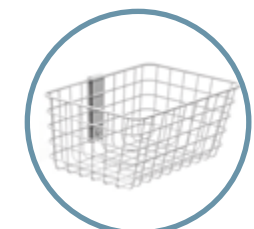
Storage box (optional)  
article nr: SYSWA-TTHV-AB



Utility shelf (optional)  
article nr: SYSWA-TTHV-FA



Wire basket small (optional)  
article nr: SYSWA-TTHV-KK



Wire basket large (optional)  
article nr: SYSWA-TTHV-KG

## System carts

### Classic

(article number: SYSWA-TT)

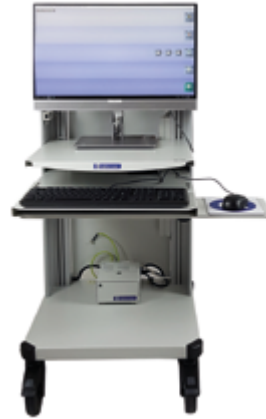
The classic system cart has proven its worth due to its robust and stable design and is mostly used for routine EEG recordings (amplifier mounting on stativ).

#### + Benefits

- + Optionally with front drawer
- + Flexible mounting for photic stimulator, camera, printer, etc.
- + Equipped with all-in-one PC or PC with DVD drive (ideal for archiving on DVD)

#### ☑ Technical details

PC size ≤24" | Load capacity ~60kg |  
Weight 32.5kg | isolating transformer included |  
Dimensions: 900 (H)/580 (D)/500 (W) in mm



### Basic

(article number: SYSWA-TTB)

The system cart „Basic“ is ideal for doctors offices or rooms with limited space.

#### + Benefits

- + Sturdy metal/plastic frame
- + Moves on four castors (two are lockable)
- + Equipped with all-in-one PC, amplifier and printer
- + Individual settings possible

#### ☑ Technical details

PC size ≤24" | Load capacity ~30kg |  
Weight 16kg | isolating transformer included  
Dimensions: 775 (H)/540 (D)/680 (W) in mm



## Case EEG

### Case EEG

(article number: KEEG-AlphaEEG)



The alpha trace case EEG for mobile EEG recordings offers space for the AlphaEEG amplifier, a laptop and accessories.

#### + Benefits

- + Completely mobile and transportable EEG
- + Removeable case lid
- + Compact arrangement of laptop and amplifier
- + System parts are cabled and ready for use
- + Amplifier mounting on flexible arm (optional)

#### ☑ Technical details

Laptop size of up to 15.6" |  
Dimensions 430 (H)/155 (D)/495 (W) in mm |  
Own weight 5.20kg

## Photic stimulator

### AlphaFlash-HD

(article number: AFLASH-HD)



This photic stimulator can be used together with either the AlphaEEG or HDEEG amplifier.

#### + Benefits

- + Mounting on system cart or tripod
- + Software-assisted sequences (frequency, duration, pause)

#### ☑ Technical details

White flashes | Control via amplifier or interface |  
Frequency 0.5 to 60 Hz | Intensity 0,05 Joule/flash

## Photic stimulator

### AlphaFlash-S

(article number: AFLASH-S)

This photic stimulator can be used together with the AlphaEEG-S amplifier.

#### + Benefits

- + LED light
- + Flexible arm
- + Mounting on system cart or tripod

#### ☑ Technical details

Frequency 1-60 Hz



### EEG amplifier HDEEG

(article number: HDEEG)



alpha trace HDEEG is the smallest EEG amplifier available. A systems can be equipped with 64-256 channels and are ideal for epilepsy monitoring.

#### + Benefits

- + Compact amplifier, to be body-worn
- + High number of channels (individually assignable) - additionally with 10/20 system inbox
- + Easy connection of a patient button (optional)
- + SpO<sub>2</sub> connection (optional)

#### ☑ Technical details

Input noise < 1 $\mu$ V rms (1-70 Hz) |  
Input impedance 10 M $\Omega$  +/- 1% |  
Max. input amplitude 10 mVpp |  
Digital resolution 16 Bit (equals 0.18  $\mu$ V) |  
CMRR >120 dB, >150 dB with active reference |  
Sampling rates of 1024/2048/4096 Hz  
with 256/128/64 channels

## Amplifiers

### EEG amplifier AlphaEEG

(article number: AlphaEEG)

The AlphaEEG amplifier fulfills all requirements on modern EEG recordings - it offers high sampling rates (up to 1kHz) and 40 channels for full diagnosis.

#### + Benefits

- + Detachable amplifier
- + Impedance test even on the amplifier
- + 10/20 EEG scheme, polygraphy and DC inputs
- + SpO<sub>2</sub> connection and patient button (optional)

#### ☑ Technical details

Input noise < 1 $\mu$ V rms (1-70 Hz) |  
Input impedance 100 M $\Omega$  +/- 1% | Digital resolution 16 Bit (equals 0.18  $\mu$ V) | CMRR >120 dB (GND-Ref), >140 dB (G1/G2-Ref) | Sampling rates 256/512/1024 Hz



### EEG amplifier

(article number: AlphaEEG-S)



The AlphaEEG-S amplifier is suitable for mobile or stationary EEG recordings and convinces by its compact and modern design.

#### + Benefits

- + Exchangeable junction boxes (10/20 EEG)
- + 22 referential and 8 differential inputs
- + Data caching with internal memory card
- + WLAN or LAN connection

#### ☑ Technical details

32GB memory card | Weight 200g  
Dimensions 170 (H)/30(T)/123 (B) in mm  
(incl. junction box)

# Amplifiers

## EEG amplifier

(article number: AlphaEEG-SE)

The AlphaEEG-SE amplifier is ideal for compact uses (e.g. with a case EEG) on intensive care units.

### + Benefits

- + EEG junction box plus additional channels
- + Individually expandable (32 or 64 channels)
- + Data caching with internal memory card
- + WLAN or LAN connection

### ☑ Technical details

32GB memory card | Weight 150g  
Dimensions 130 (H)/40 (T)/70 (B) in mm  
(incl. junction box)



## PSG Amplifier

(article number : AlphaSleep-S)

Thanks to its modern and compact design the AlphaSleep amplifier is ideal for mobile and stationary sleep recordings.

### + Benefits

- + Compact design (palm sized)
- + Exchangeable junction boxes (10/20 EEG, AASM-PSG)
- + Individually expandable (32 or 64 channels)
- + SpO<sub>2</sub>- and pressure recording
- + Integrated bi-directional audio (patient communication)
- + LAN or WIFI connection

### ☑ Technical details

32GB memory card | Weight 150g |  
Dimensions 130 (H)/40 (D)/70 (W) in mm  
incl. connection box



## EMG amplifier

(article number: see models)



EVI-3102evo

EVI-4004evo



EVI-5005evo

The Evidence EMG models are available in three different variations - 2 channels (model 3102evo), 4 channels (model 4004evo) and 5 channels (model 5005evo).

### + Benefits

- + Ideal for mobile use  
(compact size and low weight)
- + Operation directly on the system or with separate operating keyboard
- + Individual settings for maximal user comfort

### ☑ Technical details

USB interface |  
3102evo: 167 (H)/92 (W)/46 (D), 350g  
4004evo: 190 (H)/140 (W)/46 (D) in mm, 1 kg  
5005evo: 214 (H)/180 (W)/60 (D) in mm, 0.9 kg

## Cameras

### Digital Dome Camera Large

(article number: AT-VID-DK)

The digital camera with Pan/Tilt/Zoom (PTZ) function is either mounted on the system cart, the ceiling or the wall.

#### + Benefits

- + NeuroSpeed Software VID recording/review incl. video
- + Digital PTZ dome camera (Full HD resolution, H.264, audio, day and night function)
- + Automatic day/night switch (with separate IR-beamer)
- + Optical 10x zoom
- + Continuous 360° pan
- + Bi-directional audio (with separate microphone)

#### ☑ Technical details

Weight: 1.1kg | Dimensions: 132 (H) / ø 165mm  
Pan: 360° / 1.8-150° per second  
Tilt: 90° / 1.8-150° per second



### Digital Dome Camera Small

(article number: AT-VID-DKM)

The smallest network dome camera is palm sized and especially designed for recordings during day time (eg. Routine EEG).

#### + Benefits

- + NeuroSpeed Software VID recording/evaluation incl. video cut
- + Digital PTZ Dome-Camera (1280x720 resolution, H.264, incl. integrated audio)
- + Optical 5x zoom
- + 179° pan
- + Integrated audio

#### ☑ Technical details

Weight: 375g | Dimensions: ø 130 x 63 mm  
Pan: +-179° / 100° per second  
Tilt: 90° / 100° per second  
Mounting: on system cart, the ceiling or the wall



### Digital Camera

(article number: AT-VID-INT)



The digital camera is ideal for EEG recordings on intensive care units.

#### + Benefits

- + NeuroSpeed software VID recording/evaluation incl. video cut
- + Digital camera (up to Full HD resolution, H.264, (day/night function, integrated IR radiator)

#### ☑ Technical details

Weight 260g |  
Dimensions: 46 (H)/75 (W)/114 (L) in mm  
IR-radiator: g OptimizedIR, highly efficient LEDs with adjustable intensity and illumination angle / range of up to 15 m

## IR-beamer

### IR-beamer

(article number: AT-VID-IR)



This IR radiator is characterized by its modern design and energy saving illumination (even in far distances).

#### + Benefits

- + Low-Voltage radiator
- + Replaceable lenses
- + 10-120° angle illumination

#### ☑ Technical details

Max distance of up to 78m | Input: 12-24V AC/DC  
Consumption 10W | 6 incl. LEDs | Wavelength 850nm

